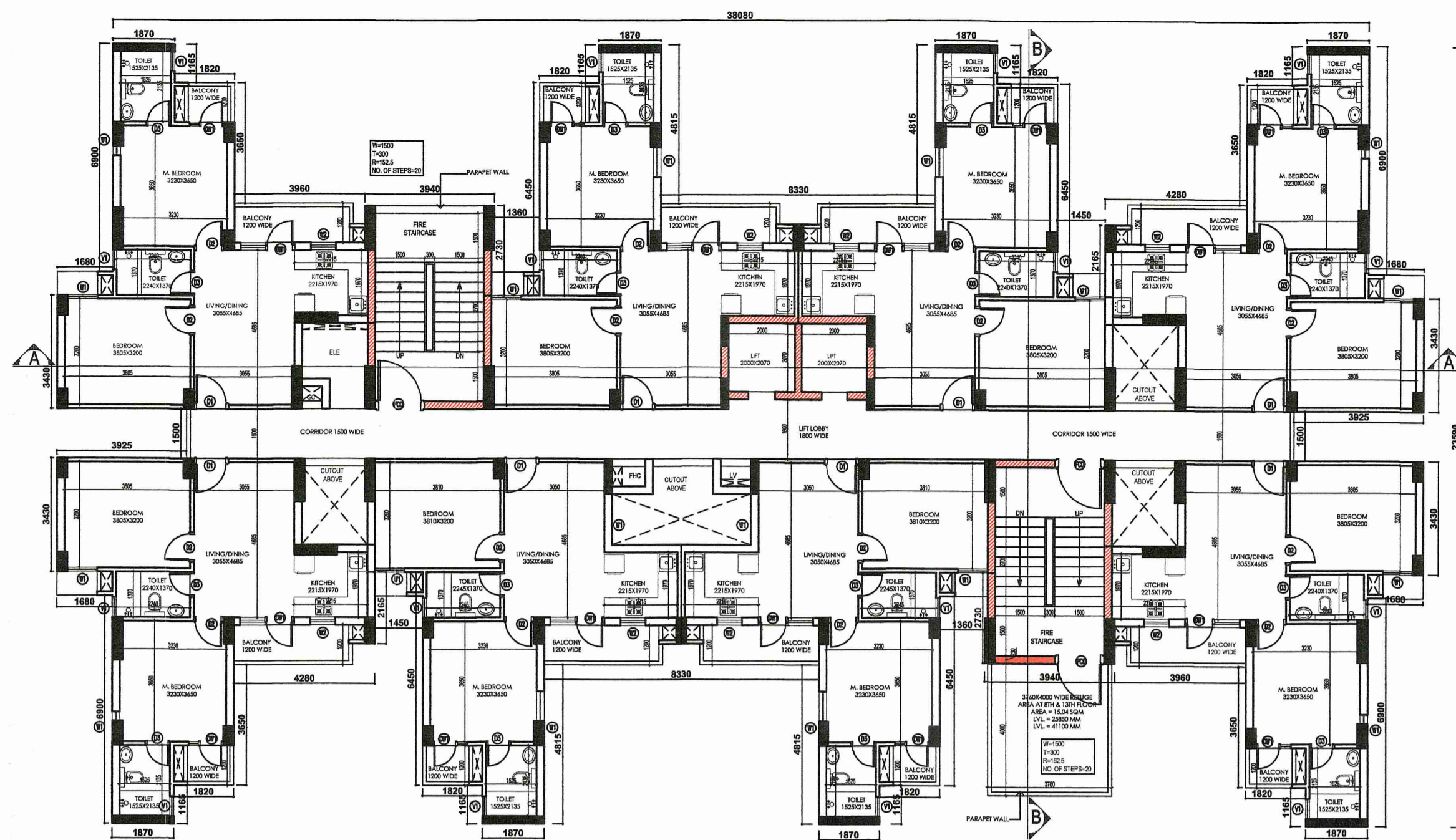
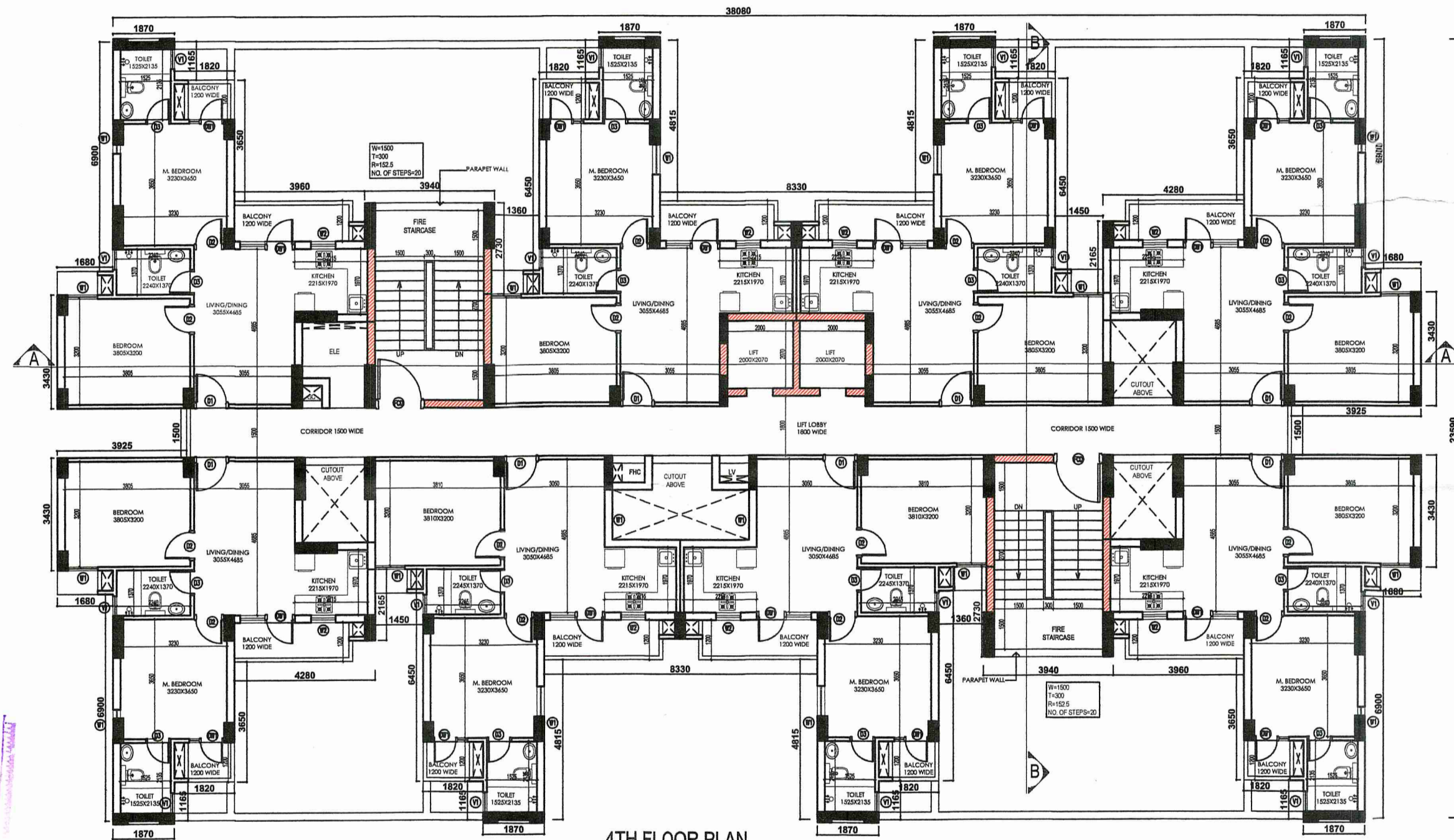


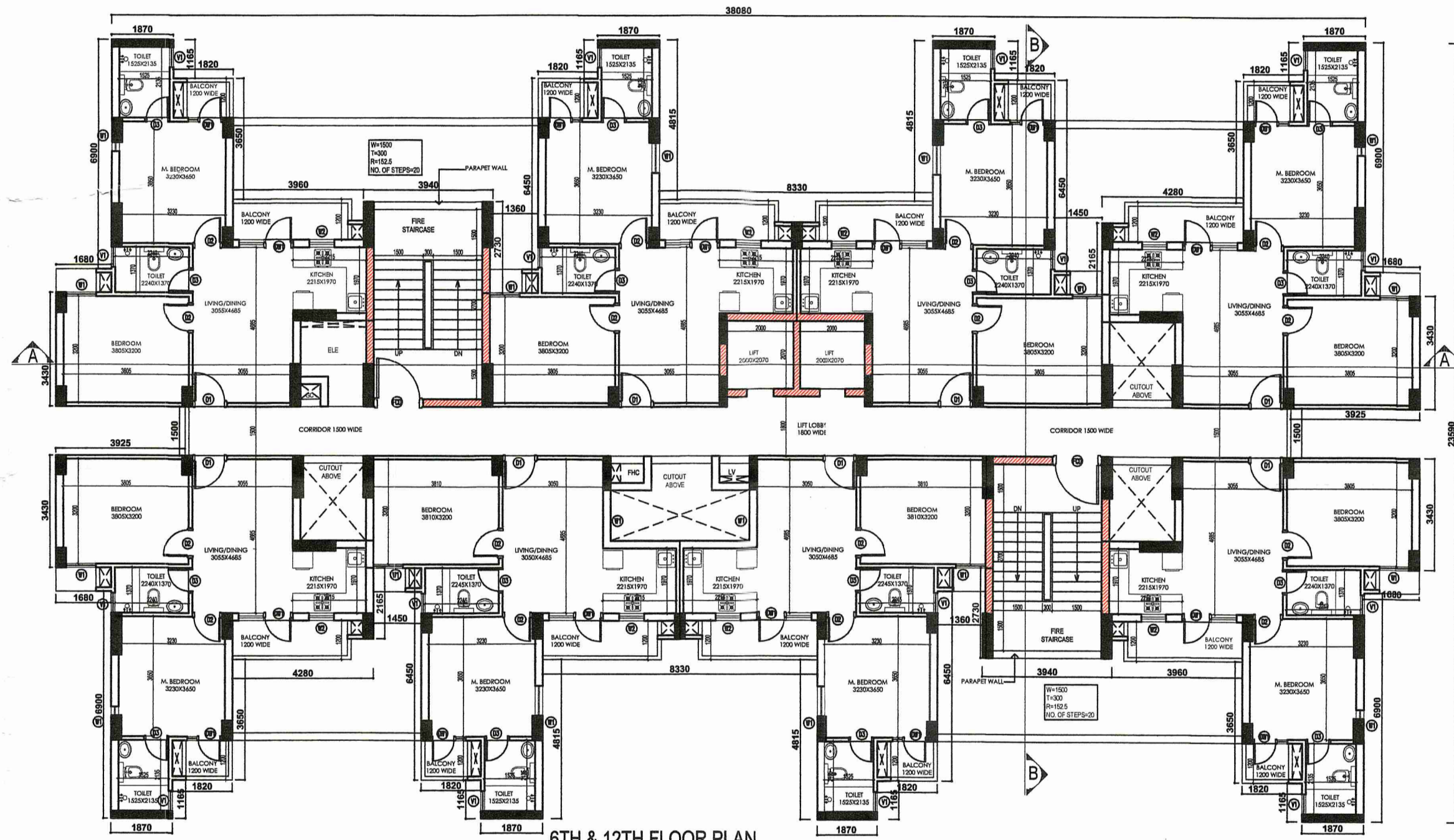
7TH & 10TH FLOOR PLAN
SCALE:1:100



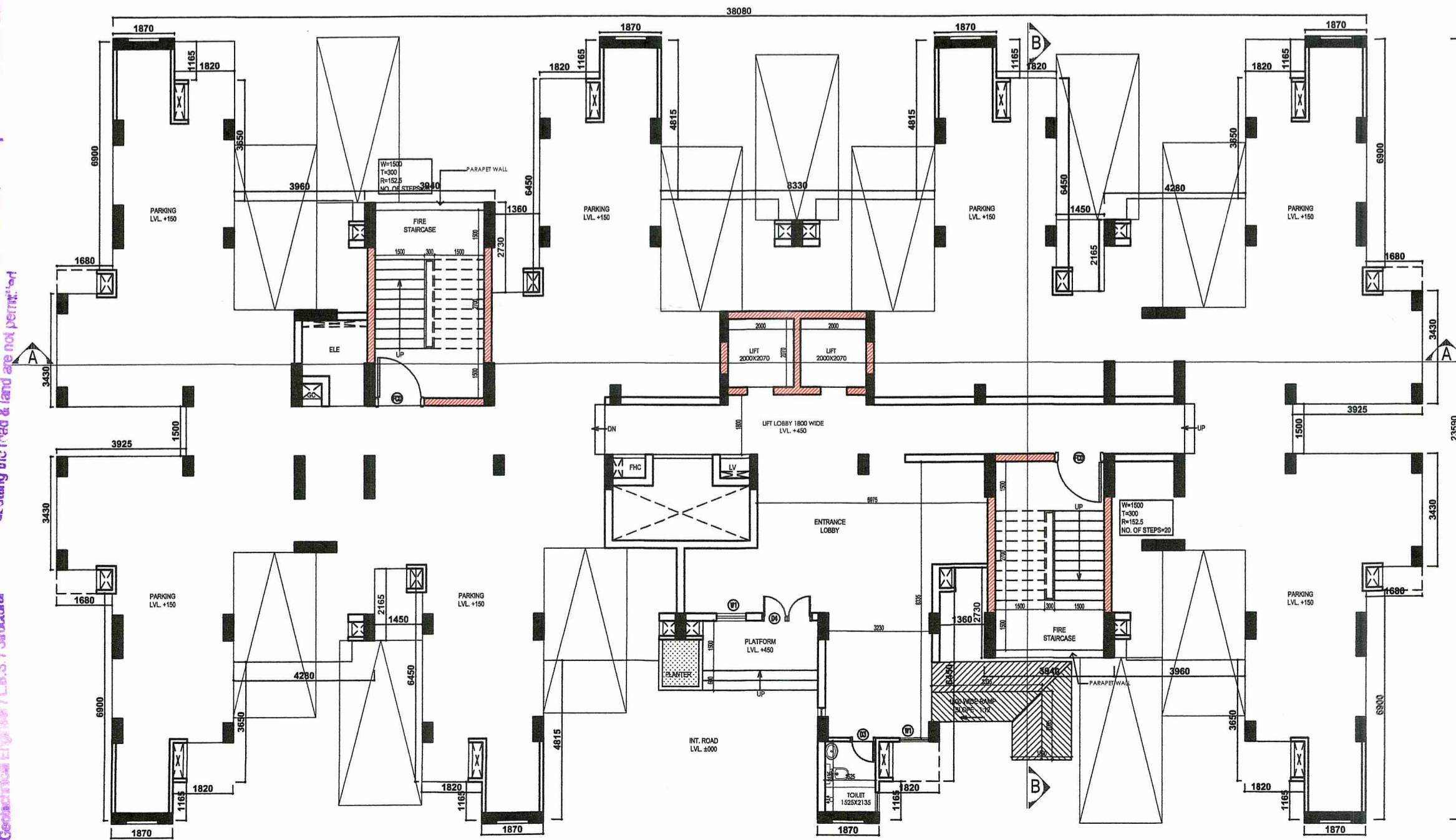
5TH, 8TH, 9TH, 11TH & 13TH FLOOR PLAN
SCALE:1:100



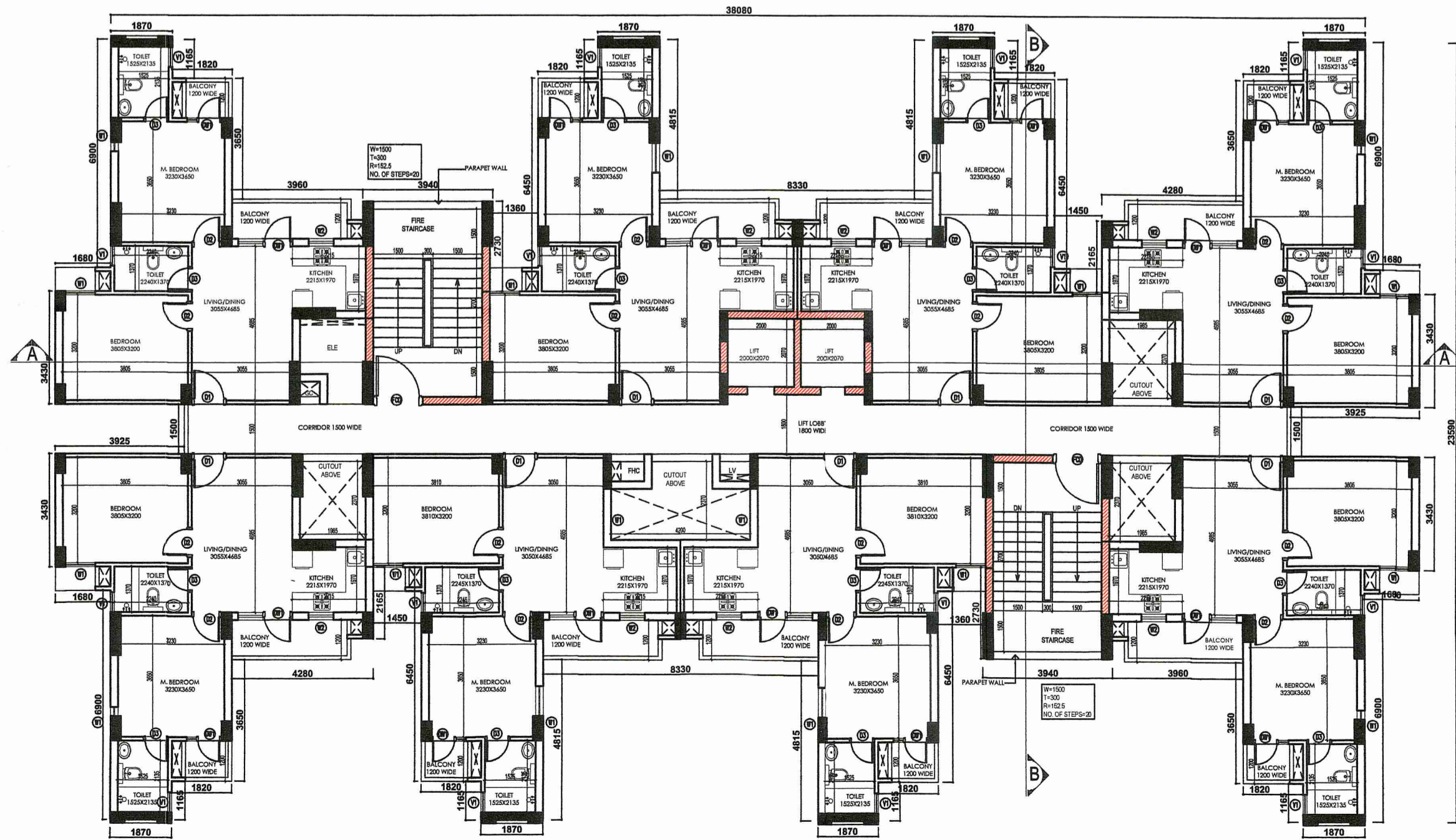
4TH FLOOR PLAN
SCALE:1:100



6TH & 12TH FLOOR PLAN
SCALE:1:100



STILT FLOOR PLAN
SCALE:1:100



1ST, 2ND & 3RD FLOOR PLAN
SCALE:1:100

SCHEDULE OF DOORS & WINDOWS

TYPE	WIDTH	HEIGHT	SILL HEIGHT	UNTEL HEIGHT	REMARK	
D1	1050	2000	00	2000	ENTRY TO UNITS	
D2	900	2000	00	2000	BEDROOMS	
D3	750	2000	00	2000	TOILET	
D4	1500	2000	00	2000	ENTRANCE LOBBY	
DW1	750-900	2560	00	2560	BALCONY(BEDROOM)	
DW2	750-1200	2560	00	2560	BALCONY(LIVING)	
DW3	750-750	2560	00	2560	BALCONY(BEDROOM)	
DW4	750-600	2560	1050	2560	BALCONY(KITCHEN)	
W1	900	1660	900	2560	BEDROOM	
V1	600	1000	1000	2000	TOILET	
FCD	1500		2000	00	2000	STAIRCASE

PLOT DETAILS:
ARCHITECTURAL DRAWINGS OF PROPOSED 5+13 STORED APARTMENT BUILDINGS FOR AFFORDABLE HOUSING PROJECT OF M/S IABA HOUSING PVT. LTD. IN AEROTROPOLIS TOWNSHIP AT ANDAL, NEAR BURDUPUR, OVER, L.R. PLOT NO:- 5650 (part), 5708 (part), 5710 (part), 5712 (part), 5713 (part), 5714 (part), 5716 (part), 5718 (part), 5719 (part), 5720 (part), 5721 (part), 5722 (part), 5723 (part), 5724 (part), 5728 (part), 5729 (part), 5730 (part), 5731 (part), 5732 (part), 5733 (part), 5734 (part), 5735 (part), 5736 (part), 5737 (part), 5738 (part), 5739 (part), 5740 (part), 5741 (part), 5742 (part), 5743 (part), 5744 (part), 5745 (part), 5746 (part), 5747 (part), 5748 (part), 5749 (part), 5792 (part), 5793 (part), 5794 (part), 5820 (part), 5822 (part) & 5718/7748 (part) L.R. KHATAN NO:- 3993, J.L. NO:- 36, MOUZAL- DASHANKRANDA, UNDER P.S.- ANDAL, DIST:- BURDWAN, WEST BENGAL.

GIAN P. MATHUR AND ASSOCIATES (P) LTD.
C- 55, East Of Kailash, New Delhi-110065
T: +9199999114 4699912
E: info@gpindia.com | W: www.gpindia.com
ARCHITECT:

SERVICES CONSULTANT:
Consumate Engineering Services (P) Ltd.
Head Office: B-47, Sector-47, Noida-201 301
Tel: (0120) 2260000 (9 Lines)
Lko. Office: R-006, Rohita, Plot No. 1, Sector-10, Lucknow
E: info@consumate.com | W: www.consumate.com

- SPECIFICATIONS:-**
- GRADE OF CONCRETE FOR SUB STRUCTURE IN PILE & PILE CAP WILL BE M30 AND FOR SUPER STRUCTURE IN BEAMS & SLAB M20 AND FOR SHEAR WALLS & COLUMNS AS PER COLUMN SCHEDULE DRAWINGS. AS PER IS:456:2000.
 - P.C.C. WORK IN M-10 GRADE CONCRETE.
 - REINFORCEMENT STEEL - Fe-500 CONFIRMING TO IS:1786-2008.
 - MINIMUM COVER OF CONCRETE :
 - (a) FOUNDATION = 50 mm.
 - (b) COLUMN = 40 mm.
 - (c) SHEAR WALL = 30 mm.
 - (d) BEAM = 30 mm.
 - (e) SLAB = 20 mm.

- NOTES:-**
- ALL DIMENSIONS ARE IN mm, CHAINAGE AND LEVELS ARE IN m. UNLESS OTHERWISE NOTED.
 - ALL STRUCTURAL DRAWINGS BE READ IN CONJUNCTION WITH ARCHITECTURAL DRAWINGS.
 - HEIGHT OF THE BUILDING IS 42.65 m.
 - ALL EXTERNAL WALLS 230 MM THK. & ALL INTERNAL WALLS 115 MM THK.
- LEGEND**
- BRICK WORK IN BURNT CLAY BRICKS
 - BRICK WORK IN FLYASH BRICKS
- INTERNAL ROAD IS 450 MM ABOVE FROM EXTERNAL ROAD.

IABA HOUSING PVT. LTD
CLIENT: 5 GORKY TERRACE, 2nd FLOOR, KOLKATA, WEST BENGAL-700017

SIGNATURE OF REVIEWER
Sanjib Guha
SANJIB GUHA
STRUCTURAL CONSULTANT
B.Sc., B.E., FIE, Chartered Engineer
Structural Reviewer (K.A.S.)
Empowered No.- ESR (I) 88/16
Structural Reviewer (H.O.D.)
Empowered No.- STERN/DA/15/0003

SIGNATURE OF STRUCTURAL ENGINEER
Chandi Prosad Khanra
CHANDI PROSAD KHANRA
BE (Civil), ME (Struct.), MIE (India)
ESE-1/2

SIGNATURE OF GEOTECHNICAL ENGINEER
Rupak Kumar Banerjee
RUPAK KUMAR BANERJEE
B.C.E., M.E., M.I.G.S., M.I.E.,
G.T. 1/3 (N.M.C.), BM/Geo-TECH-1002
Dist. P. No. 12014-15, OTER-HDCO/08/00014
GEOWBSID2019/00002

CONSULTANT/ARCHITECT'S SIGNATURE
Gian P. Mathur
GIAN P. MATHUR
ARCHITECT
B. Arch., M. Arch. I.I.A
CA No-8075/69

SIGNATURE OF LOCAL ARCHITECT'S SIGNATURE
Jui Chatterjee
AR. JUI CHATTERJEE, B-ARCH
Registration No: CA/202/134352
Ph: 9434649399, 7568593411
4/13, Subhata Commercial Complex
1st Floor, Durgapur - 713216

SIGNATURE OF OWNER
Ranjana
DRAWN BY: [Signature]
CHECKED BY: [Signature]
SCALE: [Blank]
DATE: 15.01.2020

TITLE: STILT & TYPICAL FLOOR PLANS
TOWER - 3A & 3B (LIG-I)
SHEET NO.: [Blank]
DATE: 15.01.2020

CHECKED & VETTED
Chandi Prosad Khanra
Date: 20.11.20

1. Scale compliance of all drawings including plans, sections & elevations.
 2. Approval of drawings by the concerned authorities.
 3. Building No. [Blank]
 4. 5. Entire content of drawings is the responsibility of the architect.
 6. Damping of color & color matching, filling of material & styling the text & lines are not permitted.
 7. APPROVED AT [Blank]
 8. [Blank]